

Oracle Banking Digital Experience

**Origination Social Media Integration Guide
Release 18.1.0.0.0**

Part No. E92727-01

January 2018

ORACLE®

Origination Social Media Integration Guide
January 2018

Oracle Financial Services Software Limited
Oracle Park
Off Western Express Highway
Goregaon (East)
Mumbai, Maharashtra 400 063
India

Worldwide Inquiries:

Phone: +91 22 6718 3000

Fax: +91 22 6718 3001

www.oracle.com/financialservices/

Copyright © 2018, Oracle and/or its affiliates. All rights reserved.

Oracle and Java are registered trademarks of Oracle and/or its affiliates. Other names may be trademarks of their respective owners.

U.S. GOVERNMENT END USERS: Oracle programs, including any operating system, integrated software, any programs installed on the hardware, and/or documentation, delivered to U.S. Government end users are “commercial computer software” pursuant to the applicable Federal Acquisition Regulation and agency-specific supplemental regulations. As such, use, duplication, disclosure, modification, and adaptation of the programs, including any operating system, integrated software, any programs installed on the hardware, and/or documentation, shall be subject to license terms and license restrictions applicable to the programs. No other rights are granted to the U.S. Government.

This software or hardware is developed for general use in a variety of information management applications. It is not developed or intended for use in any inherently dangerous applications, including applications that may create a risk of personal injury. If you use this software or hardware in dangerous applications, then you shall be responsible to take all appropriate failsafe, backup, redundancy, and other measures to ensure its safe use. Oracle Corporation and its affiliates disclaim any liability for any damages caused by use of this software or hardware in dangerous applications.

This software and related documentation are provided under a license agreement containing restrictions on use and disclosure and are protected by intellectual property laws. Except as expressly permitted in your license agreement or allowed by law, you may not use, copy, reproduce, translate, broadcast, modify, license, transmit, distribute, exhibit, perform, publish or display any part, in any form, or by any means. Reverse engineering, disassembly, or decompilation of this software, unless required by law for interoperability, is prohibited.

The information contained herein is subject to change without notice and is not warranted to be error-free. If you find any errors, please report them to us in writing.

This software or hardware and documentation may provide access to or information on content, products and services from third parties. Oracle Corporation and its affiliates are not responsible for and expressly disclaim all warranties of any kind with respect to third-party content, products, and services. Oracle Corporation and its affiliates will not be responsible for any loss, costs, or damages incurred due to your access to or use of third-party content, products, or services.

Table of Contents

1. Preface.....	4
1.1 Intended Audience	4
1.2 Documentation Accessibility	4
1.3 Access to Oracle Support	4
1.4 Structure.....	4
1.5 Related Information Sources.....	4
2. Origination: Social Media Integration.....	5
2.1 Prefill form Using LinkedIn, Facebook	5
2.2 Getting an Application Client ID/API Key	9
2.3 Facebook:.....	10
2.4 Getting an Application ID	12
2.5 Reference.....	13

1. Preface

1.1 Intended Audience

This document is intended for the following audience:

- Customers
- Partners

1.2 Documentation Accessibility

For information about Oracle's commitment to accessibility, visit the Oracle Accessibility Program website at <http://www.oracle.com/pls/topic/lookup?ctx=acc&id=docacc>.

1.3 Access to Oracle Support

Oracle customers have access to electronic support through My Oracle Support. For information, visit

<http://www.oracle.com/pls/topic/lookup?ctx=acc&id=info> or visit

<http://www.oracle.com/pls/topic/lookup?ctx=acc&id=trs> if you are hearing impaired.

1.4 Structure

This manual is organized into the following categories:

Preface gives information on the intended audience. It also describes the overall structure of the User Manual.

The subsequent chapters covers the following:

- Procedure containing steps for the integration of origination with the social media.
- Screenshots

1.5 Related Information Sources

For more information on Oracle Banking Digital Experience Release 18.1.0.0.0, refer to the following documents:

- Oracle Banking Digital Experience Licensing Guide
- Oracle Banking Digital Experience Installation Manuals

2. Origination: Social Media Integration

2.1 Prefill form Using LinkedIn, Facebook

External App Setting for Successful working of LinkedIn, Facebook on your site.

Below are two important steps to be done on respective platforms.

- Create App to get App ID
- Register Domain URL in App

Social Media has been successfully integrated in Origination Module. In order to make it work below are the external settings we need to do:

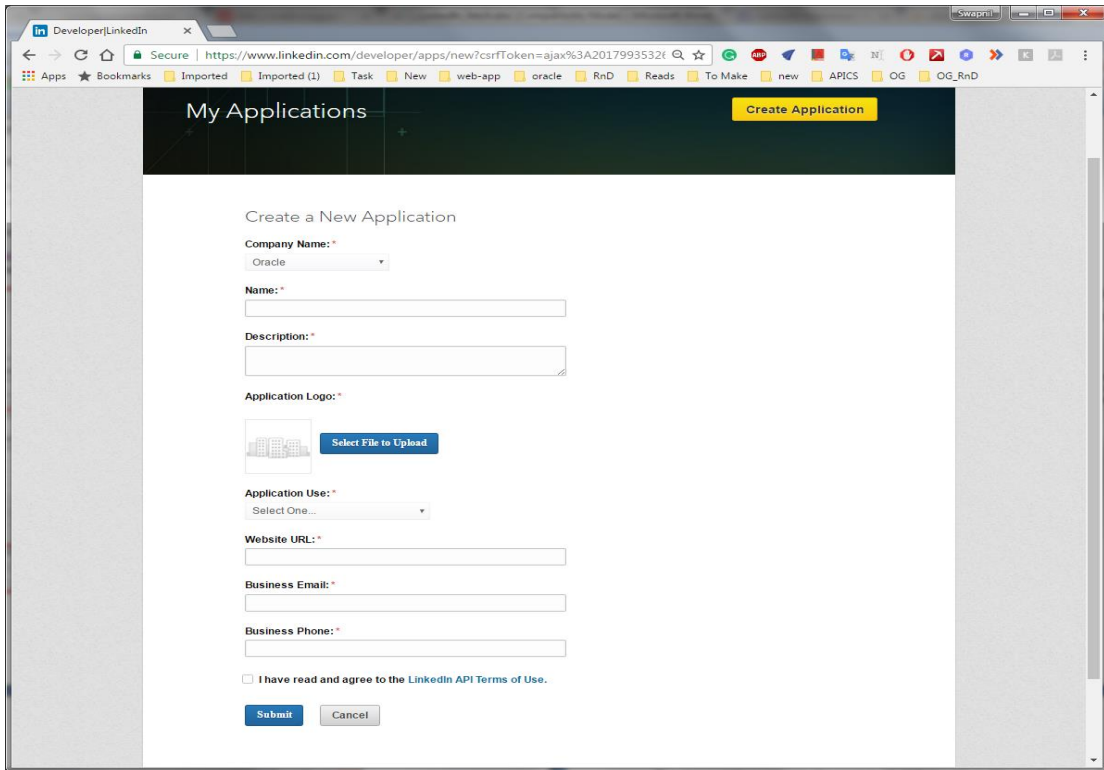
Follow Below steps to create/setup your App on respective platforms.

- LinkedIn: Firstly, Client needs to have a LinkedIn account.

Follow the step-by-step guide to creating and configure a LinkedIn App from the App Dashboard.

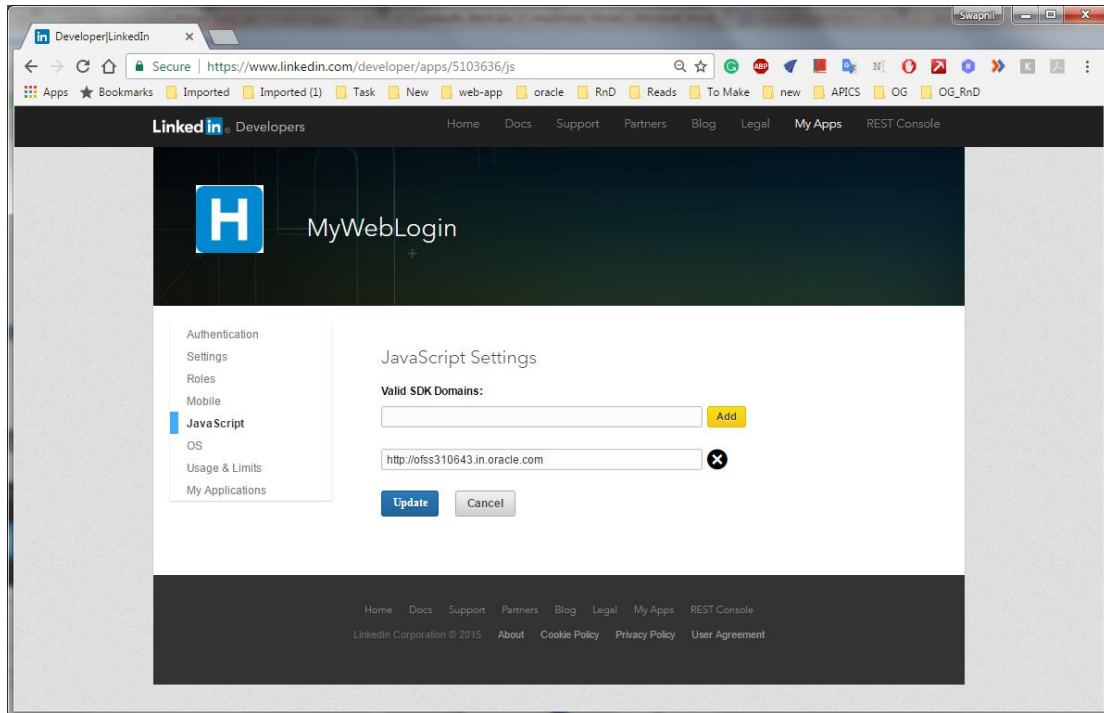
Step 1: Create a LinkedIn Application

- Creating an app for the social platform is always the first step no matter which platform you are working with in this case the created app will service the LinkedIn social login.
- Basically you are creating a gate to let your user go through this gate and access the service, and in this gate you can specify the permissions and the preferences you want to grant to your user
- To do so, go to [LinkedIn Developer Network](#) and create a new application. The following figure shows the main application creation page.

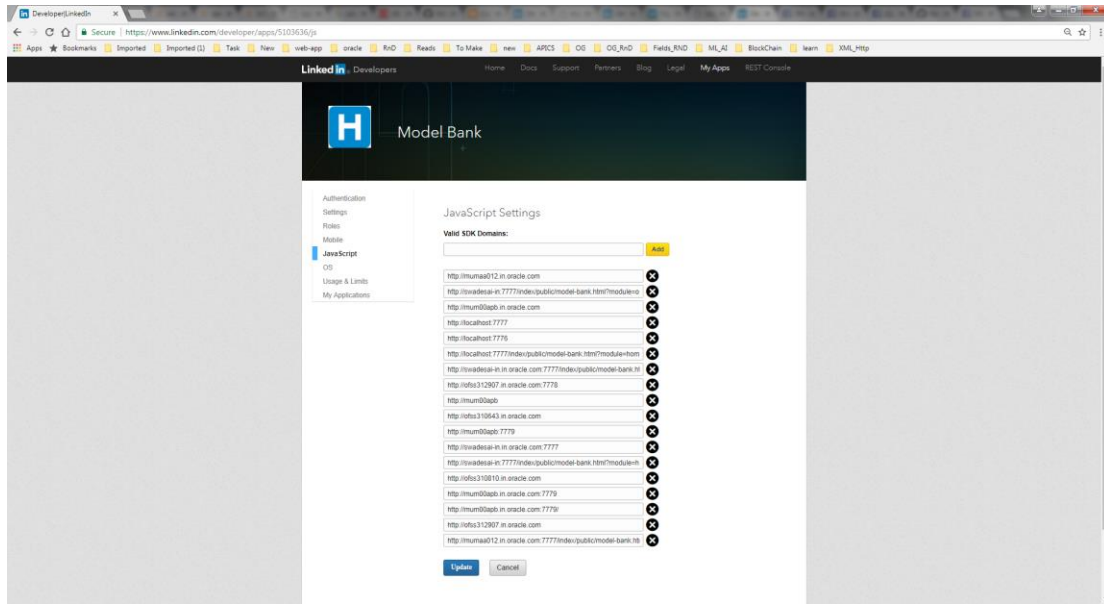


- While there are many mandatory fields of the above form, the sections highlighted above are important.
- The Default Application Permissions area is used to indicate the default set of permissions that a user must grant to the application being created. In the above figure a user must share his basic profile information with the application being created.

Step 2: Adding Domain URL In LinkedIn Application



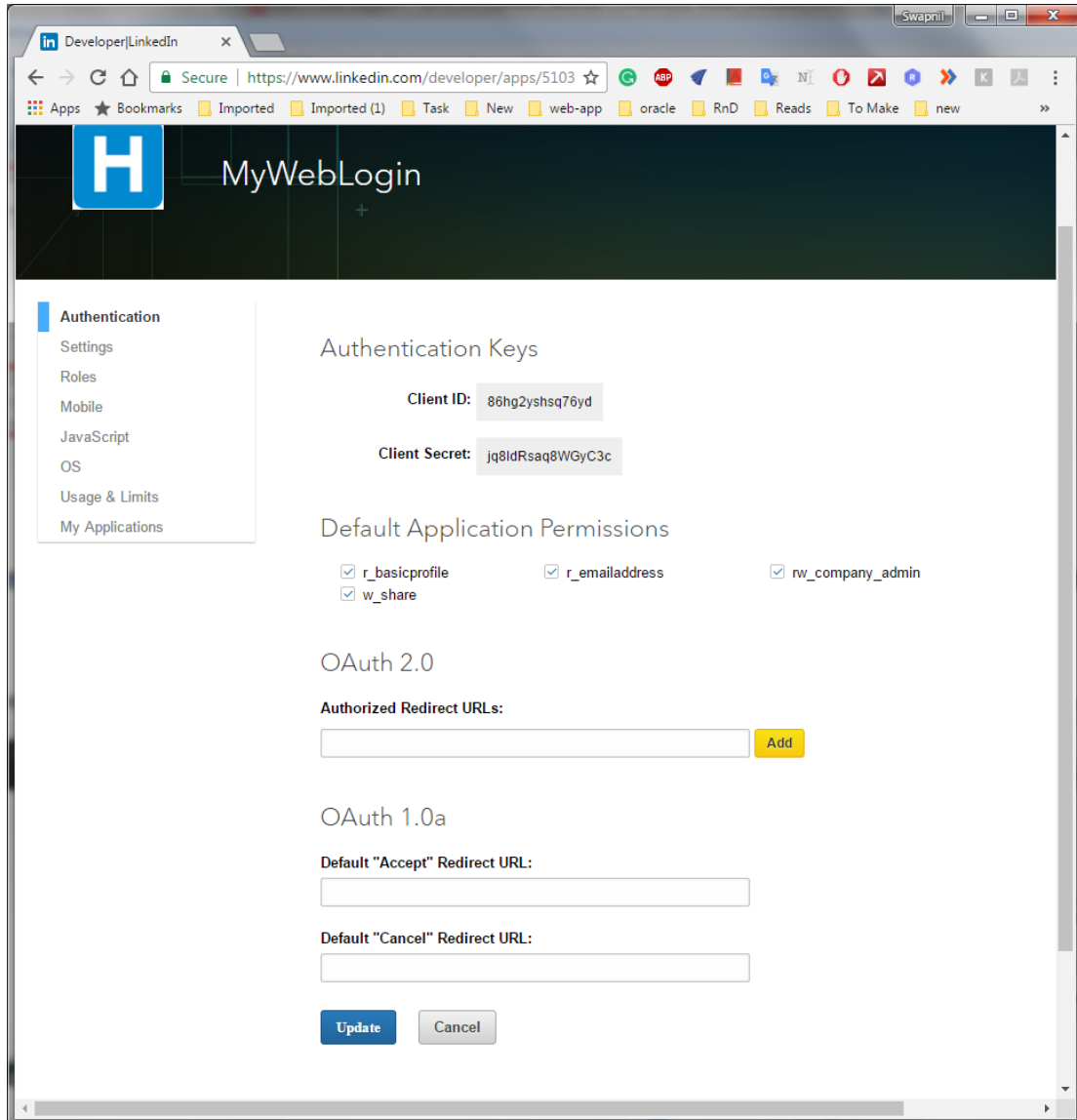
- There is another section (As shown in the above figure) titled **JavaScript** that contains one or more website URLs. In the above form, mandatory fields are important.
- The Valid SDK Domains should contain a URL that identifies your website. You should change it to a real website address.
- Once you completed the above steps, your apps settings page would something like the below.



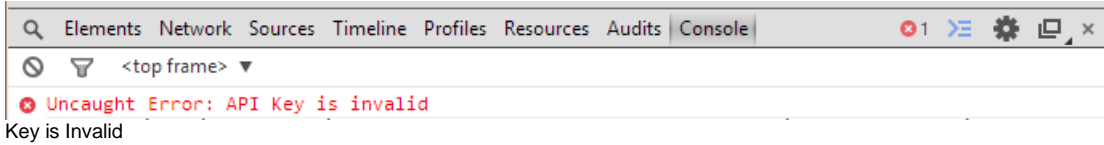
- Click on Update, Congratulations! Your LinkedIn app creation has completed

2.2 Getting an Application Client ID/API Key

- Once you enter all the required fields, hit Save to create the application. Upon successful creation you will also be shown details such as **Client ID** and **Client ID Secret**.
- In this example **Client ID** Key is sufficient and you should note it down somewhere before going ahead. The following figure shows the area where API Key is shown:



- When the web page loads, the LinkedIn JavaScript framework checks whether the Domain URL as mentioned in the application's configuration and that of the requesting page matches or not.
- If the API key is invalid you will get a Error message in the browser's JavaScript console (see below).



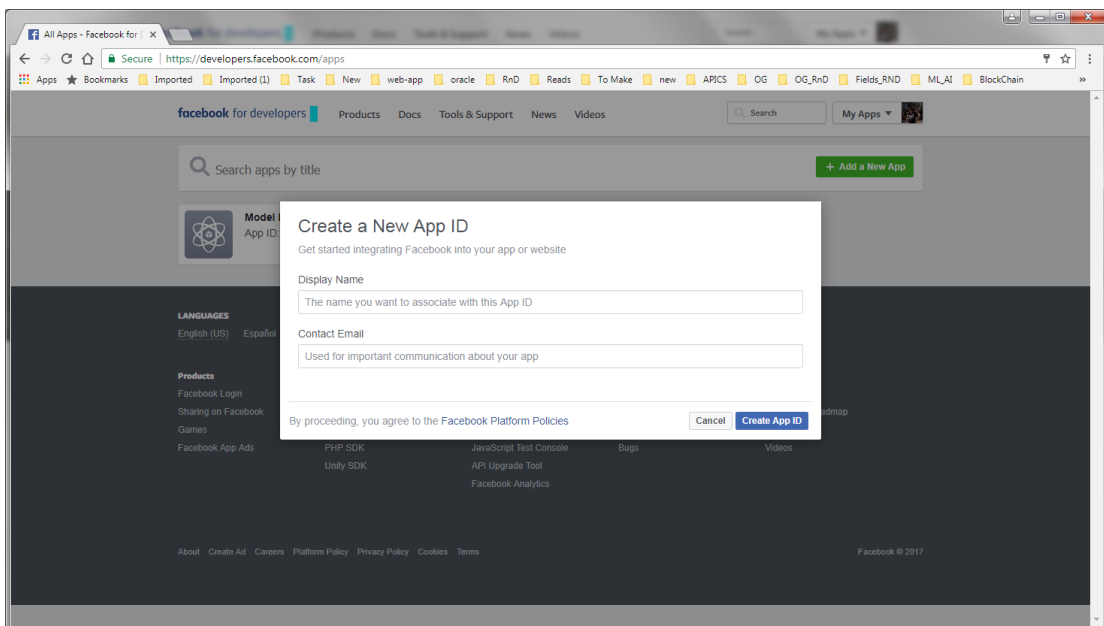
2.3 Facebook:

Firstly, Client needs to have a Facebook account.

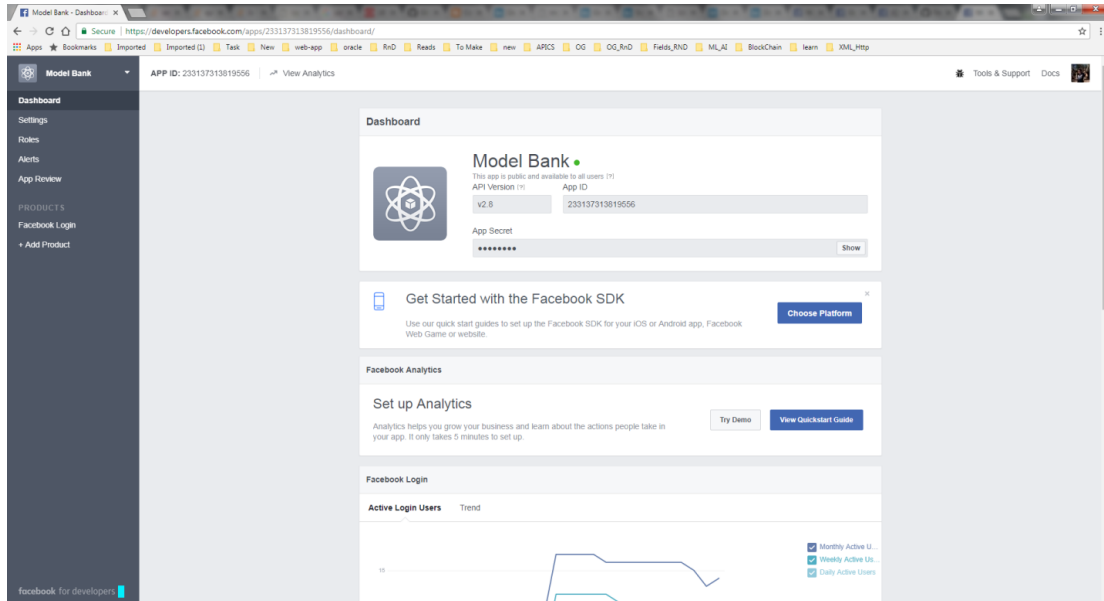
Follow the step-by-step guide to creating and configure a Facebook App from the App Dashboard.

Step 1: Create a Facebook Application

- Go to the [Facebook App Dashboard](#) and log in with your Facebook account.
- Click on Add a New App, to create a new App ID.

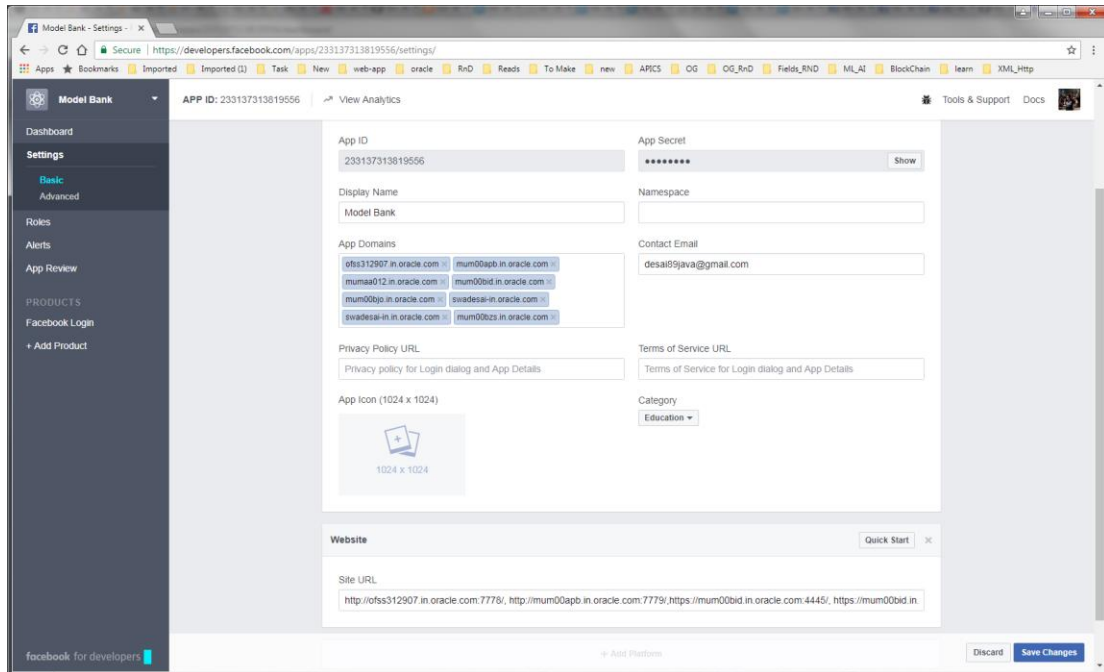


- Create a new Facebook apps with your desired name (like **ModelBank**) and email Id.
- Below Screen shows the Dashboard screen , which has App ID.



Step 2: Adding Domain URL In Facebook Application

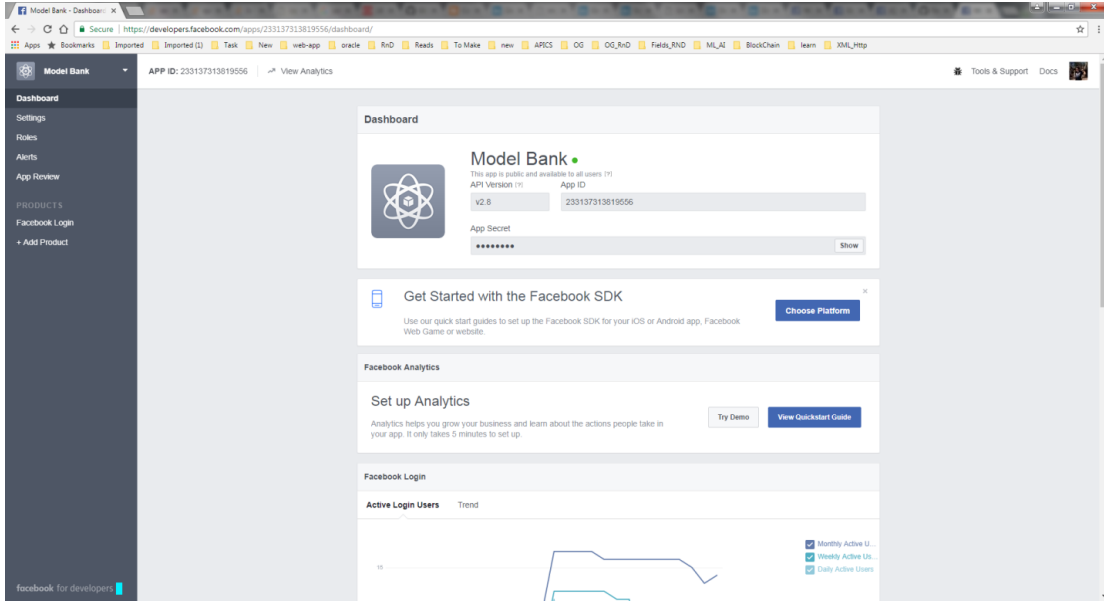
- There is another section (As shown in the above figure) titled **Settings** on the left side of the dashboard, that contains **App Domains and Website URL** section which has one or more website URLs. In the above form, mandatory fields are important.
- The App Domain and Website URL section should contain a URL that identifies your website. You should have a real website address.
- AppDomain and Website URL should look this,as shown in below image.



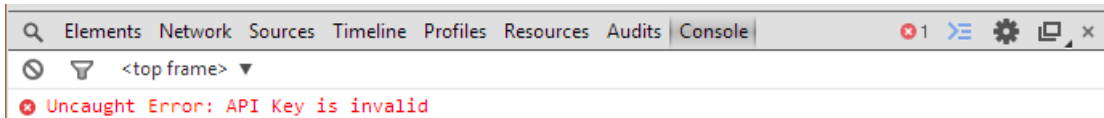
- Once you completed the above steps, your apps settings page would something like the below.
 - Now click on **App Review** link from the left side menu panel and make your apps live. Contact email is required for enable the apps live option. If you have not added apps contact email earlier, go to the settings page and add email. Once you submit the contact email, you would be able to enable the apps live option.
 - Click on Save Changes, Congratulations! your facebook app creation has completed.

2.4 Getting an Application ID

- Upon successful creation you will also be shown details such as **App ID** and **App Secret**.
- In this example **App ID** is sufficient and you should note it down somewhere before going ahead. The following figure shows the area where API Key is shown:



- When the web page loads, the Facebook JavaScript framework checks whether the Domain URL as mentioned in the application's configuration and that of the requesting page matches or not.
- If the API key is invalid you will get a Error in the browser's JavaScript console (see below).



2.5 Reference

Follow Below links to Create App ,get App ID and Add Domain URL from respective platforms. Below links are official sites which show the steps in case any change in near future.

Facebook: <https://developers.facebook.com/docs/apps/register>

LinkedIn: <https://developer.linkedin.com/docs/getting-started-js-sdk>

[Home](#)